

HOW TO IMPROVE AT CHESS USING PROFESSIONAL SOFTWARE

“CHESS KING™”

Using chess software will help you win more games.

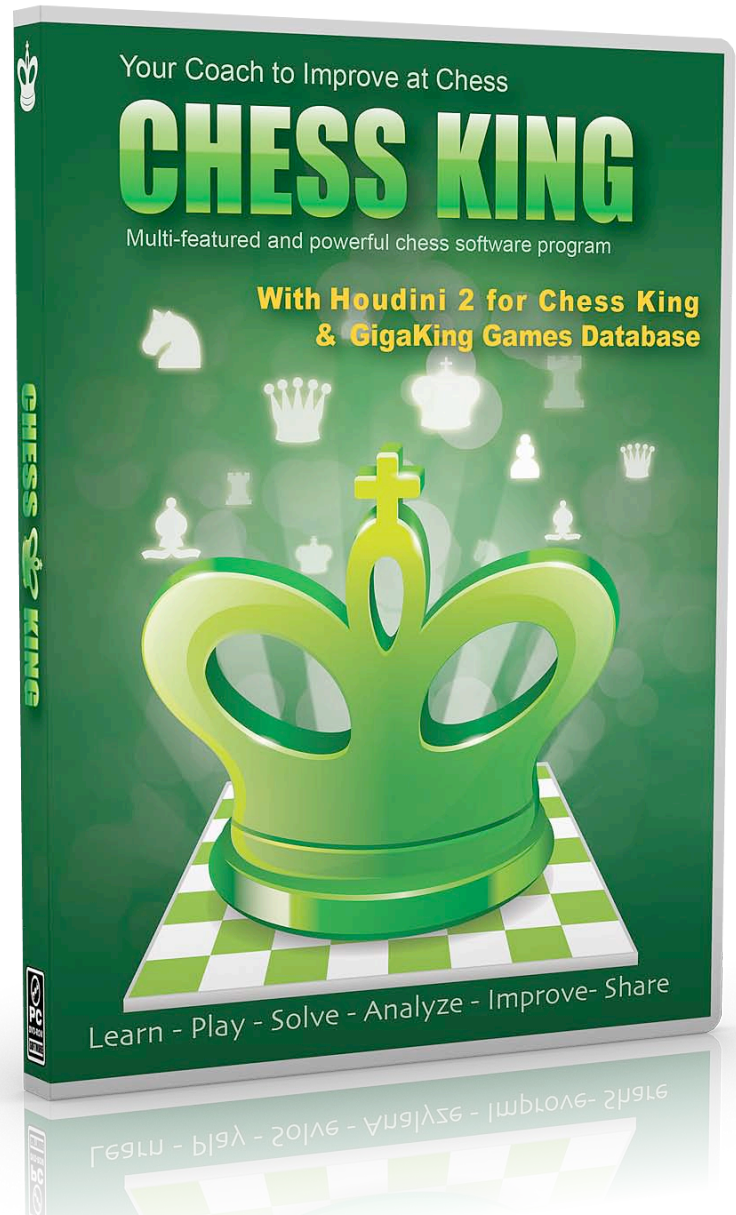
You play chess. You love it. You've played seriously for a few years and have improved a little. Your scoresheet folder is getting thicker, and you're starting to forget the exact moves of each game. You've read a few chess books and watched some chess DVD's. But you're not improving so much anymore. Could it help to use a professional chess software package?

Definitely! Actually nowadays if you don't use modern chess software, you will be at a big disadvantage versus your friends who do.

In this article we will go over the chess tools available with professional chess software, and we will use as example the new, powerful and affordable software package Chess King™ from www.chess-king.com.

Working with a computer-based analysis, game storage and training tool will improve your chess skills and make it easier to learn.

What can you do with Chess software? In what does chess software help you progress? What does chess software contain?



An enormous database of master chess games.

The Chess King software contains over 5 million games. That's almost all the relevant master games that have been played since the birth of professional chess until today. Games are continuously being played and added to the database every month. With powerful search functions, you cannot miss a game that was played in the opening line you are studying. The software even takes into consideration opening transpositions, where one player deliberately uses a transposition to avoid variations he or she dislikes.

ChessKing [#4235529, C:\ChessKing\Data\Bases\c:\p\GigaKing\GigaKing.cdp]

Find games: White: Pelletier Yannick (SUI) Black: Ignore colors Other fields: Search

Database: Now Import Purge Export

Chess KING Your Coach to improve at Chess

GameNo	White	WhiteElo	Black	BlackElo	Score	Date	Event	Site	ECO
1	Schmidt Ralf (GER)	2126	Pelletier Yannick (SUI)	2592	0-1	1/1/2010	It (open)	Basel (Switzerland)	A03
2	Heimann Andreas (GER)	2469	Pelletier Yannick (SUI)	2592	0-1	1/2/2010	It (open)	Basel (Switzerland)	C41
3	Hendriks Willy (NED)	2424	Pelletier Yannick (SUI)	2592	0-1	1/3/2010	It (open)	Basel (Switzerland)	B40
4	Granda Zuniga Julio E (PER)	2636	Pelletier Yannick (SUI)	2592	0-1	2/25/2010	It (cat.12)	Nancy (France)	E15
5	Ramessa Davor (CRO)	2326	Pelletier Yannick (SUI)	2592	0-1	3/6/2010	Ch Europe	Rijeka (Croatia)	A13
6	Navara David (CZE)	2722	Pelletier Yannick (SUI)	2592	0-1	3/8/2010	Ch Europe	Rijeka (Croatia)	C10
7	Guidarelli Laurent (FRA)	2446	Pelletier Yannick (SUI)	2592	0-1	5/1/2010	Ch France (team) 2010	France	C10
8	Ekstroem Roland (SUI)	2489	Pelletier Yannick (SUI)	2592	0-1	7/13/2010	Ch Switzerland	Lenzerheide (Switzerland)	E08
9	Ootes Lennart (NED)	2161	Pelletier Yannick (SUI)	2592	0-1	7/19/2010	It (open)	Biel (Switzerland)	C41
10	Rosenzhal Jonathan (SUI)	2202	Pelletier Yannick (SUI)	2592	0-1	7/27/2010	It (open)	Biel (Switzerland)	E20
11	Niderost Bruno (SUI)	2228	Pelletier Yannick (SUI)	2592	0-1	8/28/2010	Ch Switzerland (team) 20	Switzerland	C41
12	Zhu Chen (QAT)	2480	Pelletier Yannick (SUI)	2592	0-1	10/24/2010	It "Trophée CCAS" (Gr. B)	Cap d'Agde (France)	E36
13	Lahno Katenyna (UKR)	2539	Pelletier Yannick (SUI)	2592	0-1	10/25/2010	It "Trophée CCAS" (Gr. B)	Cap d'Agde (France)	D39
14	Hickl Joerg (GER)	2573	Pelletier Yannick (SUI)	2592	0-1	11/6/2010	Ch Switzerland (team) 20	Switzerland	A12
15	Rindisbacher Lars (SUI)	2190	Pelletier Yannick (SUI)	2592	0-1	12/26/2010	It (open)	Zuerich (Switzerland)	C41
16	Moser Guido (SUI)	1994	Pelletier Yannick (SUI)	2584	0-1	1/1/2011	It "Hilton Open"	Basel (Switzerland)	A47
17	Battaglini Gabriel (FRA)	2452	Pelletier Yannick (SUI)	2584	0-1	1/2/2011	It "Hilton Open"	Basel (Switzerland)	E56
18	Huguet Sergio (HON)	2123	Pelletier Yannick (SUI)	2584	0-1	3/9/2011	It (open)	Reykjavik (Iceland)	B07
19	Bergsson Stefan (ISL)	2135	Pelletier Yannick (SUI)	2584	0-1	3/11/2011	It (open)	Reykjavik (Iceland)	C01
20	Zelbel Patrick (GER)	2408	Pelletier Yannick (SUI)	2584	0-1	3/12/2011	It (open)	Reykjavik (Iceland)	C03
21	Getz Nicolai (NOR)	2391	Pelletier Yannick (SUI)	2584	0-1	3/16/2011	It (open)	Reykjavik (Iceland)	B33
22	Pogosian Vladimir (ARM)	2166	Pelletier Yannick (SUI)	2584	0-1	3/22/2011	Ch Europe	Aix les Bains (France)	A20
23	Sreeves Clement (SCO)	2204	Pelletier Yannick (SUI)	2584	0-1	3/24/2011	Ch Europe	Aix les Bains (France)	C03
24	Erdogdu Mert (TUR)	2431	Pelletier Yannick (SUI)	2584	0-1	3/26/2011	Ch Europe	Aix les Bains (France)	E11
25	Brendel Oliver (GER)	2375	Pelletier Yannick (SUI)	2584	0-1	5/8/2011	Ch Switzerland (team) 20	Switzerland	C41
26	Debray Christopher (FRA)	2402	Pelletier Yannick (SUI)	2584	0-1	5/31/2011	Ch France (team) 2011	Mulhouse (France)	E32
27	Schiendorfer Emanuel (SUI)	2304	Pelletier Yannick (SUI)	2590	0-1	8/27/2011	Ch Switzerland (team) 20	Switzerland	E15

Current Game

[...] 1. f4 d5 2. Qd3 g6 3. e3 d7 4. e2 d6 5. O-O O-O 6. e1 d6 7. e3 d6 8. d3 d6 9. d6d2 d6 10. d4 d6 11. e4 d6 12. a3 d6 13. b3 d6 14. d6b2 d6 15. d6c1 d6d7 16. d6h1 d6 17. d6d3 a4 18. b4 b5 19. d6b5 d6b5 20. d6e2 d6d3 21. d6d3 d6d8 22. d6c5 d6b6 23. e4 d6d4 24. d6c4 d6c4 25. d6c4 d6c4 26. d6c4 d6b8 27. d6c1 d6e7 28. d6g1 d6b6 29. d6c2 d6e8 30. d6c1 d6e8 31. d6d2 d6d7 32. d6b2 f5 33. e5 d6h6 34. d6h1 g5 35. d6c4 d6b8 36. d6a5 d6e4 37. b6g5 d6c2

A screenshot of Chess King's Database Module Search showing Pelletier's games won with black in 2010-2011

If you're preparing to play somebody in an upcoming tournament, chances are great that you'll have at your fingertips every one of the serious games he or she has ever played. You'll immediately be able to see his or her full opening repertoire, the weaknesses and opening deficiencies, so you can decide which opening choice will give you the better chances. Then you can prepare in depth for that specific opening you have chosen, using as guide Grandmaster games on that theme.

To progress you need to know the right ideas in the openings you play. Don't try to memorize a series of moves, because inevitably you will forget something, and when your opponent will branch out of your preparation you will have a hard time to switch to your own thinking from the memorization stage. Of course you can study an opening in great detail with a book, or study a master game or two at the board with your coach. But with Chess King's large database of games, it will be much faster and easier to search through the games in the opening you wish to study, select only the best grandmaster games from the list, and run through the games, paying attention not to the exact

moves, but to the plans and strategies chosen by the masters. Seeing the result of the game and the engine's evaluation while you look over the games on the screen, you will be forming your "chess intuition", and you will be able in relatively little time to understand which plans have a good chance to work, and which will likely fail. This is the way many masters train, and the computer with its power and enormous number of games is an invaluable help. Nowadays one can study whole openings in days when it took months or years before chess software was created.

Search database

gbPlayers
White:
Black: Pelletier Yannick (SUI) ☐ Ignore colors

gbResult
☒ ☐ 1-0 ☐ 1/2-1/2
☒ 0-1 ☐ None

gbYear
☒ Min: 2010 Max: 2011

gbElo
☐ Min: Max:
☒ Any ☐ Both

gbECO
☐ Min: Max:

Search Cancel

The search box uses to restrict the search to only games won by Pelletier playing black and only in 2010-2011.

From the close to 5 million games in the GigaKing database you will instantly find the 27 games that fit the criteria

An incredibly strong chess analysis engine.

The days of Deep Blue are gone. Now chess engines are considerably stronger than they used to be, even just a few years ago. It has now become clear to everybody that it does not make any sense to have humans play chess with computers, it would be like having a runner racing an automobile. Nowadays, it is only interesting to watch the result of computer programs playing other computer programs, in order to determine which one of the engines is strongest. While it may look like one could not improve further the already phenomenal strength of chess engines, some programmers have shown great talent, uniting their programming passion with their love and mastery of chess, and have achieved jumps in engine strength that have surprised everybody. That was the case with Vasik Rajlich, author of the strong chess engine Rybka. Recently, to everybody's amazement, Rybka has been surpassed by the engine named Houdini, created by the talented programmer from Belgium, Bernard Houdart. In a recent, forty-game match between Rybka and Houdini, Houdini won with a score of 23.5-16.5. Even more interesting perhaps was that Houdini showed almost frightening human chess, by playing positional pawn sacrifices in many games. Houdini is now firmly at the top of computer chess engines.

Having a strong chess engine to assist you in analyzing your games is key for you to quickly get a grasp of the position and get instant evaluations of different candidate moves. The world of chess has drastically changed since the last century, where Soviet World Champions had teams of Grandmasters who were working full-time for weeks or months to come up with evaluations and plans for positions that could arise in the champion's games. Nowadays, chess engines can do this work in minutes or even seconds. The more powerful the computer, the larger the number of cores, the faster and the deeper will the engine give its verdict with detailed variations.



It is most useful to analyze one's chess games with a powerful engine

In the screenshot above, a strong chess engine was used in the home preparation of GM A. Kosteniuk in her game against IM A. Huss. The surprising winning move 18...Nc5! was found at home during the preparation. Huss resigned 2 moves later.

A way to prepare for your next opponents

At chess tournaments, it is quite stressful to start a game and not have any idea of what your opponent will be playing. You might think that your opponent knows the opening better than you do, and that might indeed be the case if you have not revised that specific opening in a long time. It is useful to know the likelihood of which openings may show up on the board, and for that Chess King is invaluable. Just go to the Database mode, search for the player you will be playing, and you will be shown all the openings he or she plays. It's like being shown a choice of 3 questions for the next school examination, instead of the possible hundreds. Of course it's possible that he will play yet another opening, but then he will be in an unfamiliar situation, having never played that opening before, and that will give you, if anything, a psychological advantage.

Find games

White:

Black:

☐ Ignore colors

Other fields...

Reset

Search

Database

New

Import

Purge

Export

CHESS KING

Your Coach to Improve at Chess

	GameNo	White	WhiteElo	Black	BlackElo	Score	Date	Event
1	3083020	Perruchoud Benoit (SUI)	2194	Meylan Andre (SUI)	2022	1-0	7/29/2005	It (ope
2	3083863	Parrigoni Sebastien		Meylan Andre (SUI)	2022	0-1	7/30/2005	It (ope
3	3086825	Keysener Philippe (SUI)	1769	Meylan Andre (SUI)	2022	1-0	8/1/2005	It (ope
4	3164056	Lauterdal James		Meylan Andre (SUI)	2022	1-0	12/29/2005	It (ope
5	3619103	Kraus Tomas (CZE)	1961	Meylan Andre (SUI)	1774	1-0	11/18/2007	Ch Wo
6	3620903	Ciloglu Dogu (TUR)	1769	Meylan Andre (SUI)	1774	1-0	11/20/2007	Ch Wo
7	3623071	Giroyan Gary (FRA)	1999	Meylan Andre (SUI)	1774	1-0	11/22/2007	Ch Wo
8	3625769	Akdas Tutku Doruk		Meylan Andre (SUI)	1774	1/2-1/2	11/24/2007	Ch Wo
9	3629629	Tseng Woei Haw		Meylan Andre (SUI)	1774	1/2-1/2	11/26/2007	Ch Wo
10	3631676	Caliskan Kerem (TUR)	1754	Meylan Andre (SUI)	1774	0-1	11/28/2007	Ch Wo
11	4370876	Sher Miron N (USA)	2421	Meylan Andre (SUI)	1964	1-0	7/8/2010	Ch Swi
12	4517298	Botta Gabriele (SUI)	2270	Meylan Andre (SUI)	1964	1-0	12/27/2010	It (ope
13	4570140	Korchnoi Viktor (SUI)	2556	Meylan Andre (SUI)	2022	1-0	3/26/2011	Simulta

Current Game

A quick search for the games with Black of Andre Meylan will show that he always plays the French defense against 1.e4

A way to store all your games in one safe place

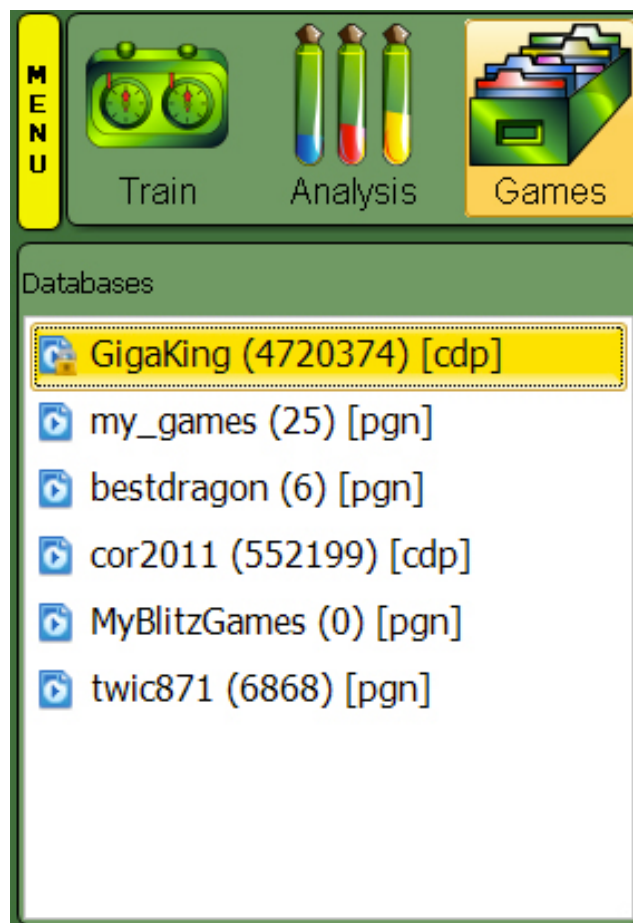
There is nothing worse than trying to remember a game you played and you know you found the best move... 2 years ago. Now you've forgotten it. If you have all your games in Chess King you have it all with you at all times and all doubts will be dissipated instantly.

To enter your games into Chess King it's easy, there are many ways to do so. The way most people do is right after their serious games, they come home with their scoresheet, and play the moves on the board. If you just played a national tournament where they have electronic boards, chances are that the games are online and you can download them in PGN format, then import them to Chess King for analysis. You can also play games against the computer, and Chess King will automatically save all your games into your personal games database. If you like to play chess on the internet, make sure to pick a playing site that offers the feature of saving your games so you can access them in a PGN file. That's very useful, you can then import all your online games to Chess King.

In Chess King you can manage several databases, for example:

- 1) GigaKing Database with millions of games
- 2) Your personal tournament games database
- 3) Your games played against the computer
- 4) Your online blitz games
- 5) Your training games or special analysis
- 6) New games from 2012 that you have downloaded from the web

You can have as many or as few databases as you wish, Chess King allows you to combine them, import and export databases at will.



*An example of the database list
You can have as many chess databases as you wish*

You need to analyze your games after you play them!

If you don't review your game in detail after playing it, chances are that you will play the same mistakes the next time, you can't allow that to happen. To improve at chess, you should consider each game a lesson, and it should turn into a building block towards playing better the next time.

Analyzing your game allows you to see if you missed something in the opening, i.e. if the "theory" recommends something else, or if you missed something later on in the game.

The key analysis features of Chess King are:

1) The Tree

When you enter a move, you immediately see in the tree how many games were played with that particular move, and as advance in the variation, you continuously see how the numbers go down. At a glance you can see where you went "off theory". That's very useful in studying opening theory, you can select a move and then analyze it with the engine.

[...] 1.e4 c5|2.♘f3 d6 3.d4 cxd4 4.♗xd4 ♘f6 5.♗c3 g6 6.♙e3 ♙g7 7.f3 ♗c6 8.♖d2 O-O 9.♙c4 ♙d7 10.h4 ♜c8

Moves	Positions	Success
♗f3	503,237	52%
♗c3	73,497	49%
c3	55,643	52%
d4	13,176	47%
f4	8,306	47%
d3	5,466	48%
b3	4,276	49%
c4	4,114	42%
g3	3,332	49%
♗e2	3,016	54%
♙c4	2,854	32%
b4	1,894	45%
a3	422	45%
♗a3	143	47%
♙e2	73	45%
♙b5	69	15%

"Sicilian tree", i.e. after 1.e4 c5

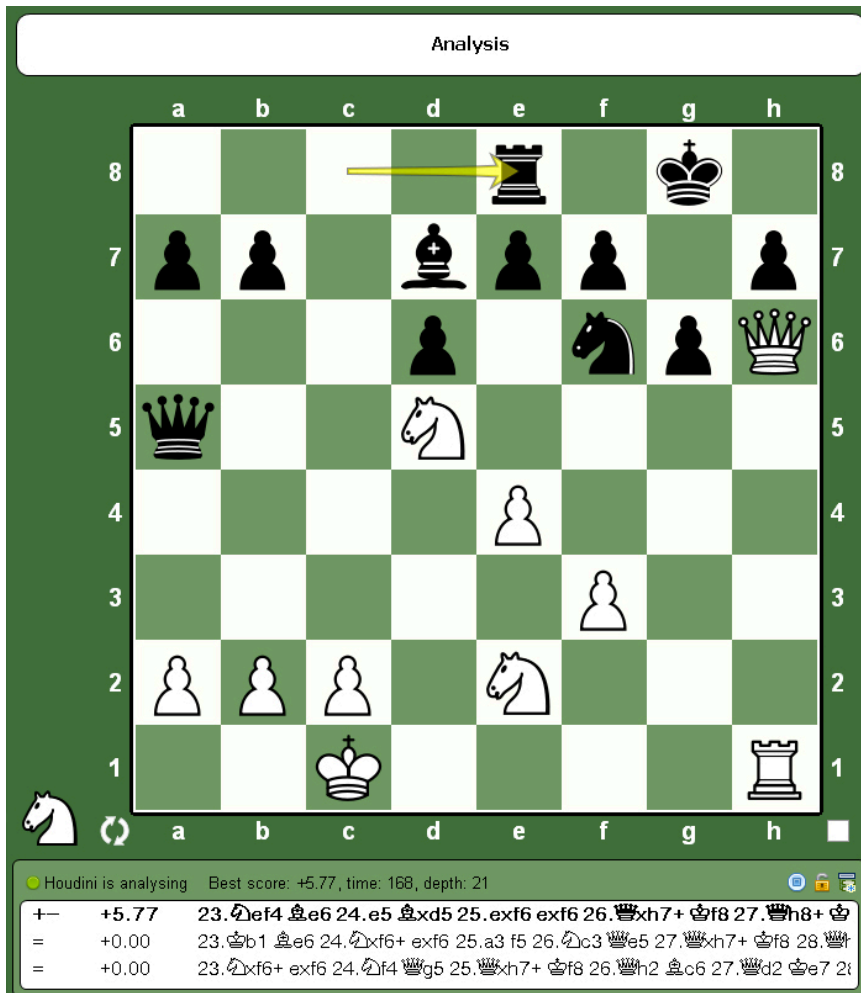
[...] 1.e4 c5|2.♘f3 d6 3.d4 cxd4 4.♗xd4 ♘f6 5.♗c3 g6 6.♙e3 ♙g7 7.f3 ♗c6 8.♖d2 O-O 9.♙c4|♙d7 10.h4 ♜c8

Moves	Positions	Success
♙d7	9,221	44%
♗d7	581	47%
♗xd4	386	36%
♖a5	275	43%
a6	229	26%
♗e5	143	44%
a5	117	51%
♗a5	74	40%
♖c7	45	28%
♖e8	43	23%
e6	17	9%
♖b6	5	20%
d5	4	12%
♖b8	3	50%
♙e6	2	0%
e5	2	50%

tree after the 9. Bc4 in the Dragon Sicilian

2) The Engine

You can have at all times (except when you're playing, of course) your engine running. Chess King includes the currently most powerful engine available, Houdini 2. Houdini is a state-of-the-art chess engine combining outstanding positional evaluation with the most sophisticated search algorithm. The name Houdini was chosen because of the engine's positional style, its tenacity in difficult positions and its ability to defend stubbornly. Houdini will often use razor-sharp tactics to deny its opponents escape routes when it has the better position. At the time of writing Houdini leads all the major Computer Chess rating lists and is widely considered to be the strongest chess engine on the planet. From numerous interviews it appears that many top Grand Masters including the current chess World Champion Viswanathan Anand use and appreciate Houdini.



Houdini 2 has no trouble finding the winning move 23. Nef4! played by Anatoly Karpov against Viktor Korchnoi in their famous 1974 game.

Houdini 2 is included in Chess King and is the strongest engine currently available. For very powerful computers up to 32 cores, and for getting the maximum engine analysis power in Chess960, an upgrade to Chess King Pro is recommended.

3) The ability to enter variations, comments, arrows and more

When you analyze a chess game, undoubtedly you will have comments and variations, you may want to point out blunders, you most likely will find better moves, and maybe whole variations you should have considered. In Chess King you can enter all of those easily.

You can even add arrows, and markers of all kinds, shapes or colors.

[...] 1.e4 c5 2.d4 d6 3.d4 cxd4 4.♞xd4 ♞f6 5.♞c3 g6 6.♞e3
♞g7 7.f3 ♞c6 8.♞d2 O-O 9.♞c4 ♞d7 10.h4 ♞c8 11.♞b3 ♞e5
12.O-O-O ♞c4 13.♞xc4 ♞xc4 14.h5 ♞xh5 15.g4 ♞f6 16.♞de2
♞a5 17.♞h6 ♞xh6

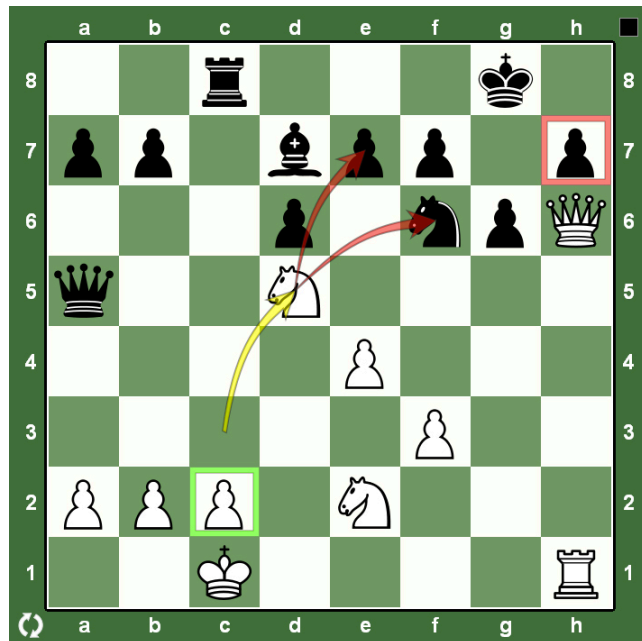
[17...♞h8 18.♞xf8 ♞xf8 19.♞b1 (19.♞e3 ♞c5 20.♞d4 ♞e6 21.♞b1 b5
22.♞xe6+ fxe6+- Kruppa,Y-Golubaev/USSR/1984/) 19...♞b4 (19...♞e6
20.♞f4 g5 21.♞xe6+ fxe6 22.♞e2 ♞e5 23.c3 ♞g7 24.♞c1 h6 25.♞d3
♞b5 26.♞he1± Chudinovskih,A-Yakimainen/URS/1977/) 19...♞g7 20.
♞d5 ♞a6 21.♞xf6 ♞xf6 22.♞xh7 ♞e6 23.♞f4 ♞b5 24.♞xe6+ fxe6 25.
♞h6+ ♞e8 26.♞xg6+- Cuijpers,F-Kaspret,G/WchJ Dortmund/1980/)
20.g5 ♞h5 21.♞c1 ♞e6 22.♞b3 ♞e5 23.♞xh5 ♞xb3 24.♞xh7 ♞xa2+
25.♞c1 ♞g7 26.♞dh1∞ Almrot-Gernud/corr SVE-ch/1974/;
17...♞fc8 18.♞xg7 ♞xg7 19.♞h6+ ♞g8 20.♞d5 (20.♞d3 ♞e6 21.g5
♞h5 22.♞g3 ♞e5 23.♞xh5 g5 24.♞xh5 ♞g7 25.f4 d5 26.♞hd1∞
Zambon-Wagman,S/Italia/1974/) 20...♞d8 21.e5 dxe5 22.♞d2 ♞e8 23.
♞d5 ♞e6 24.♞xf6+ exf6 25.g5 fxg5 26.♞xh7+- Prandstetter,E-
Spiridonov,N/Agard/1976/]

18.♞xh6 ♞fc8 19.♞d3

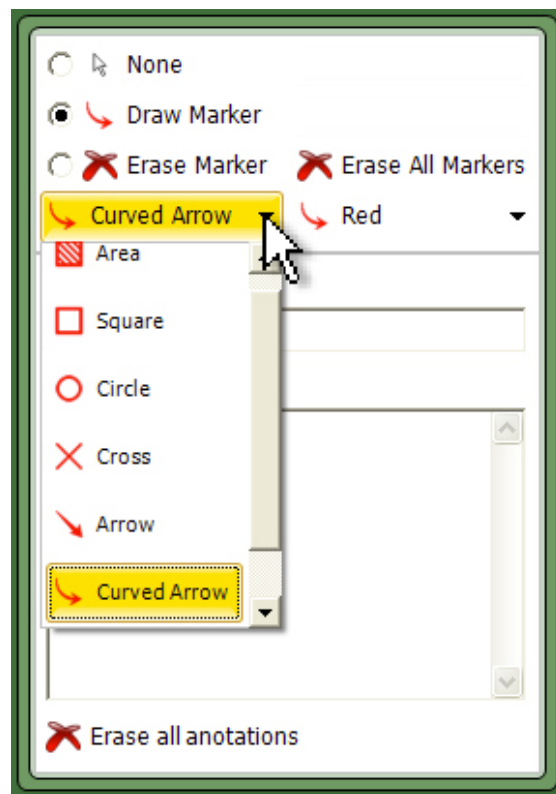
[19.g5 ♞h5 20.♞xh5 g5 21.♞d5 ♞xc2+ 22.♞b1 ♞d8 23.♞ef4 ♞f8
24.♞xe7+ ♞xe7 25.♞d5 ♞xb2+ 26.♞xb2± Dobsa,S-
Reinhardt,E/corr/1982/;
19.♞d5 ♞c5 (19...♞d8 20.e5 dxe5 21.♞d2 ♞c7 22.♞d5 ♞xc2+ 23.♞
b1 ♞xd2 24.♞xc7 ♞xe2 25.♞d5 ♞e8 26.♞c3∞ Omelchenko,L-
Mikhailov,A/corr-9Wch/1977/) 19...♞c7 20.♞b1 ♞h8 1-O/Skjoldager-
Dalhoff/corr/1975/) 20.♞xc5 ♞xc5 21.♞d5 ♞xd5 22.exd5 ♞xd5 23.♞h3
♞xa2 24.b3 ♞a1+ 25.♞d2 ♞f1 26.♞g3∞ Ipek,Y-Eskelinen/Groningen EU-
chJ/1982/]

19...♞4c5 20.g5 ♞xg5 21.♞d5 ♞xd5 22.♞xd5 ♞e8 23.♞ef4
♞c6 24.e5!+- ♞xd5 25.exf6 exf6 26.♞xh7+ ♞f8 27.♞h8+♣Black
Resigns 1-0

[27.♞h8+ ♞e7 28.♞xd5+ ♞xd5 29.♞e1+]



Images of an analysis window,
a diagram with markers, and
the easy-to-use marker window



Fun playing the computer

There is nothing worse than playing a computer and losing. If you search for the hash tag “#chess” on Twitter, you will find countless tweets of people, depressed because they played chess with their computer (or phone), and lost miserably. They can play 100 times and they will lose every game. That’s not fun. I may add that it’s not much more fun “tweaking” the engine strength and forcing the computer to play in the lowest of levels, so you can comfortably beat it. That’s not so much fun either. Besides the “Pick Your Level Classical Chess”, Chess King has a “Random Playing Mode” which has literally thousands of possible starting positions, which guarantees a new situation each game.



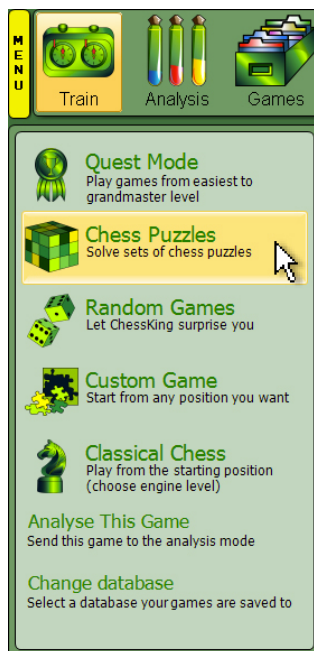
*One of the hundreds of possible starting positions
in the “Random Chess” mode.*

Variables you can tweak:

Total Material, Pawn percent, Advantage

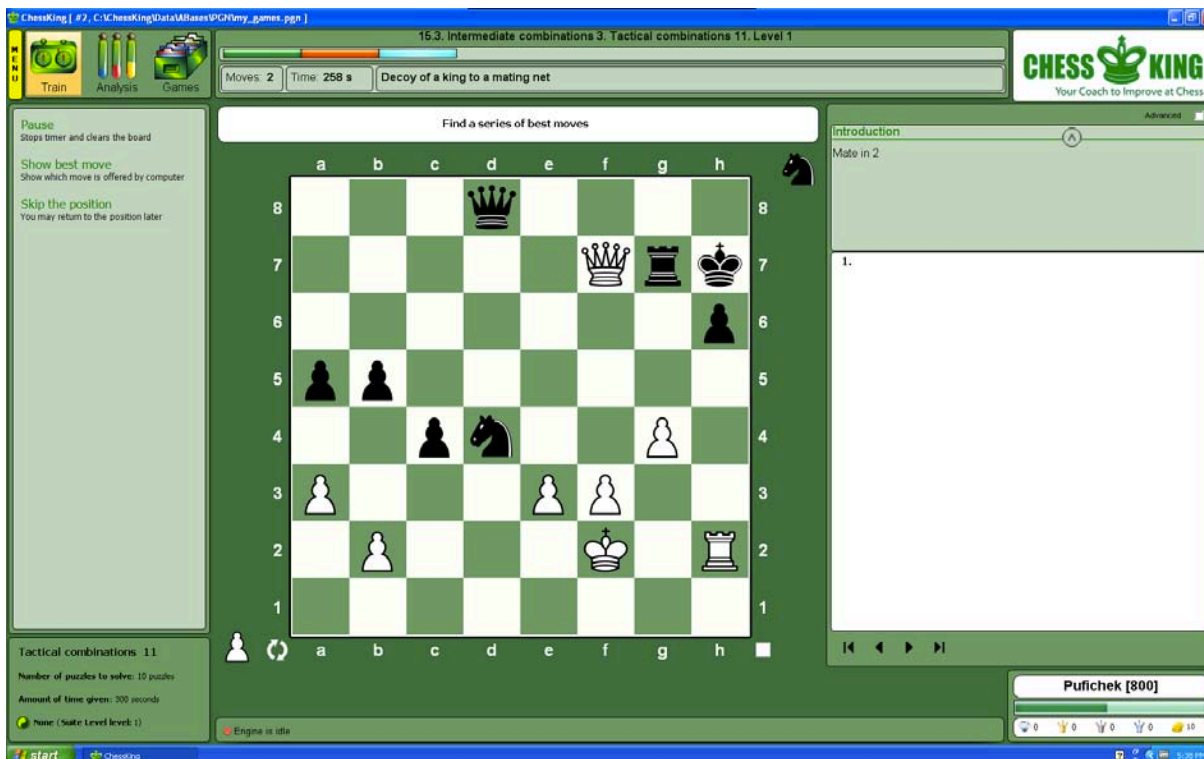
A way to train your mind by solving chess puzzles

Chess King includes more than 1500 puzzles, from extremely easy to Grandmaster level (25 subcategories), that will keep you or your child busy for hours. Working through those puzzles is sure to raise one's chess level.



*Screenshots
of chess
puzzles
mode.*

*In the puzzle
below
white
checkmates
in two moves,
can you find
the solution?*



A way to learn to play chess in Quest style

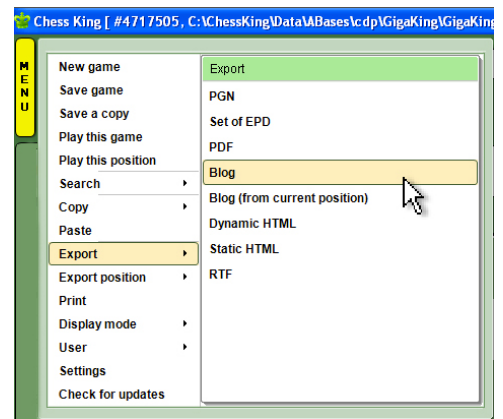
You like to go up levels and conquer trophies? The Quest mode is for you. You start from very easy starting positions, and keep unlocking levels, until you meet your match. More than 100 types of games will keep you challenged and entertained. While at the start you get a very large advantage, your opponent is no one else than the extremely strong Houdini, who is unforgiving for any mistake, so you really have to give it your best!



Example of Quest Mode starting position

Share your wins with the world

Chess King has several export modes, so you can easily share your games with your friends on the web. Just select the kind of export you'd like to do, for example to your blog, and you get the code to be copied and pasted in a post, resulting in an instant beautiful playable chess applet.



Anatoly KARPOV – Viktor KORCHNOI

Result: 1-0
Site: Moscow
Date: 1974



[...] 1.e4 c5 2.d4 f3 d6 3.d4 cxd4 4.dxd4 f6 5.c3 g6 6.e3 g7 (6...d4? 7.b5+! d7 8.♖xg4) 7.f3 (7.♗d2? d4) 7...d6 8.♗d2 O-O 9.♗c4 d7 10.h4 ♗c8 11.♗b3 d5 12.O-O-O ♗c4 13.♗xc4 ♗xc4 14.h5 ♗xh5 15.g4 ♗f6 (15...d3 16.♗h3) 16.♗de2! ♗a5 17.♗h6 ♗xh6 18.♗xh6 ♗fc8 19.♗d3! (19.g5 ♗h5 20.d3 ♗xc3!) 19...♗c5 (19...♗d8) 20.g5! ♗xg5 21.♗d5! ♗xd5 (21...♗xd5 22.♗xh7+ ♗f8 23.♗h8#) 22.♗xd5 ♗e8 23.♗ef4 ♗c6 24.e5! ♗xd5 (24...dxe5 25.♗xf6+ exf6 26.♗h5 gxh5 27.♗g1+ ♗h8 28.♗xf6#) 25.exf6 exf6 26.♗xh7+ ♗f8 27.♗h8+ resigns 27...♗e7 28.♗xd5+ ♗xd5 29.♗e1+ ♗d7 30.♗xe8+ "wins easily"

generated by **Chess King**

IM Jacek Stopa (2482) – GM Alexandra Kosteniuk (2467)

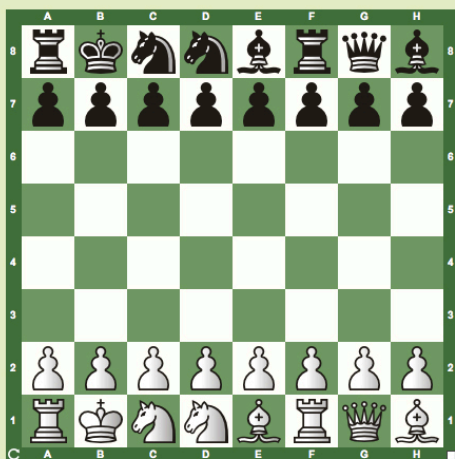
Result: 0-1
Site: Saint Louis Chess Club
Date: 2011.09.14



[...] 1.e4 c5 2.d4 cxd4 3.c3 dxc3 4.♗xc3 e6 5.♗f3 ♗c6 6.♗c4 ♗b4 7.O-O ♗ge7 8.♗g5 ♗a5 9.♗b5 d5 10.exd5 exd5 11.♗f4 O-O 12.♗d3 ♗d8 13.♗c7 ♗d7 14.a3 ♗a5 15.♗xa5 ♗xa5 16.♗e5 ♗d8 17.♗e1 ♗ac6 18.♗f3 ♗g6 19.♗a4 ♗d7 20.♗b3 ♗f4 21.♗f1 ♗b6 22.♗a4 ♗g6 23.♗d1 a6 24.♗xd5 ♗e6 25.♗xe6 fxe6 26.♗xe6+ ♗h8 27.♗d6 ♗xb2 28.♗d1 ♗ce5 29.♗c4 ♗xf3+ 30.gxf3 ♗e5 31.♗d5 ♗f6 32.♗e7 ♗e2

Kosteniuk, Alexandra – Stopa, Jacek

Result: 1-0
Site: Saint Louis Chess Club
Date: 2011.09.14



SPID#:763 [...] 1.f4 f5 2.g4 g6 3.e4 fxe4 4.♗xe4 d5 5.♗g2 ♗d6 6.d3 ♗c6 7.♗b3 O-O-O 8.♗c3 (8.♗c3) 8...e6 9.♗h4 ♗d7 10.♗e2 (10.♗c5 ♗d4 11.♗f2 ♗xc3 12.bxc3) 10...b6 11.c3 e5 12.O-O-O e4 (12...exf4) 13.♗ed4

From now on, you can publish in just a minute all your games as soon as they are played. Chess960 is supported!

You can use the standard green board color or even create a board color that fits your design. There is no more beautiful and functional pgn applet on the web.

Create YouTube videos!

Now that your games are well organized in your Chess King database, and you've analyzed them with the strongest engine Houdini, and shared them on your blog, why don't you do the ultimate and publish your games on YouTube?

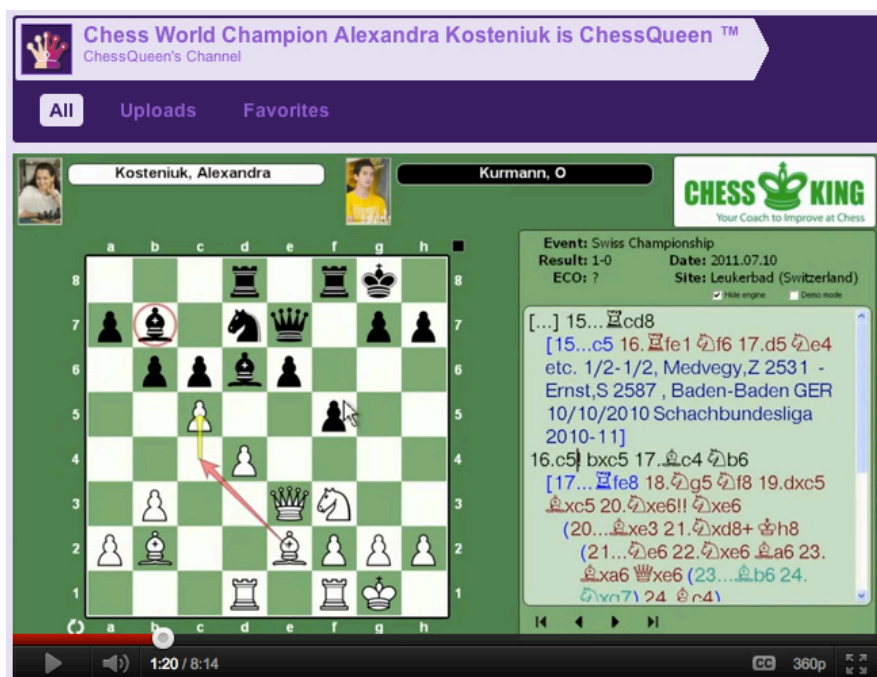
For that all you need to do is record the screen of your PC or Mac, and use any microphone to run through some audio comments as you advance. On the PC, we recommend CamStudio, and for the Mac ScreenFlow.

Have a look at these two channels which use Chess King:

www.YouTube.com/ChessKing The official YouTube channel of Chess King™

www.YouTube.com/ChessQueen

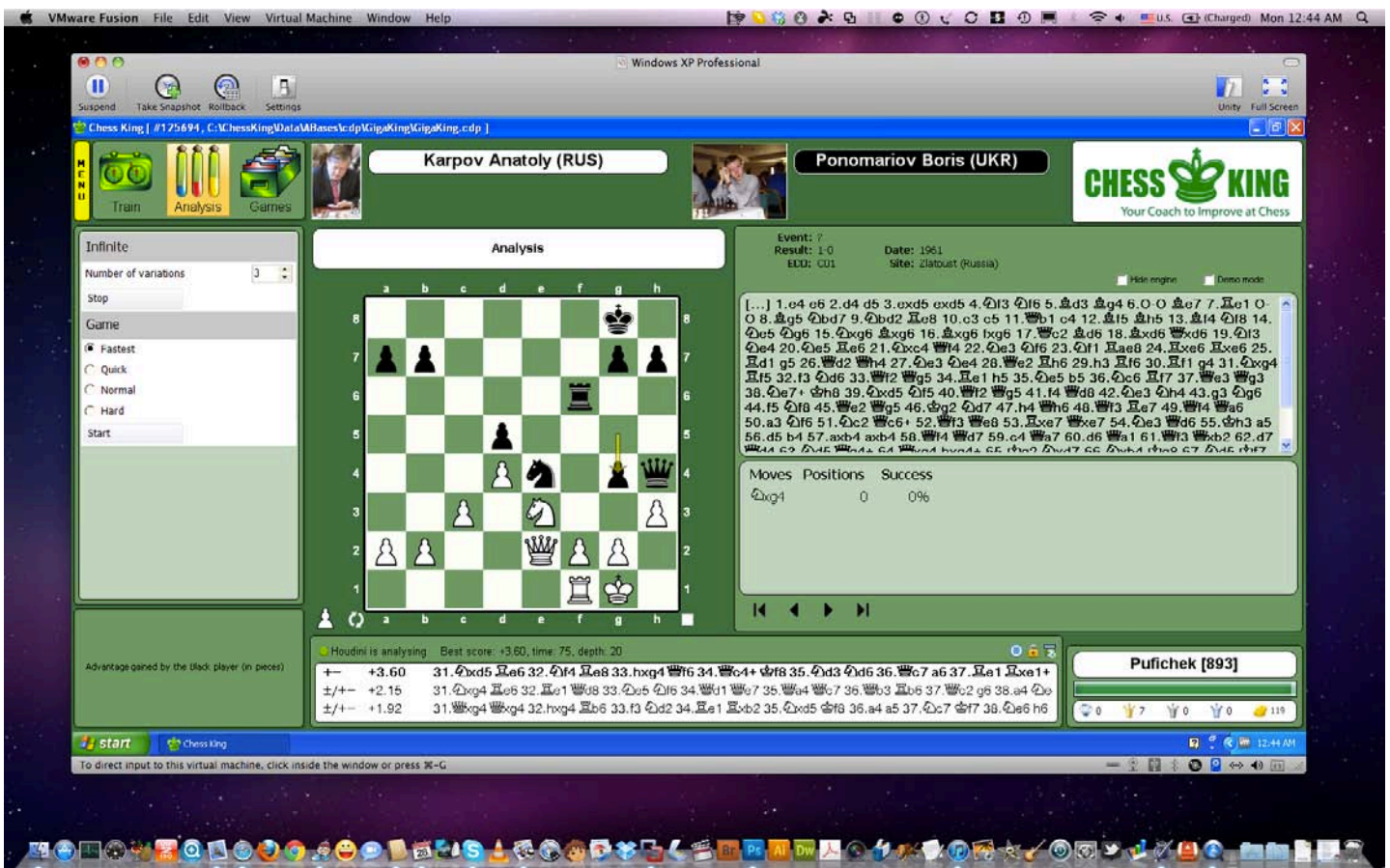
The official YouTube channel of Chess Queen™ Alexandra Kosteniuk



Can Chess King work on the Mac?

You know by now that Chess King is a program for the PC, that is, for Windows PC's. But that does not mean that it does not work with the Mac, it certainly does!

For that, you just need to use any emulator, for example VMWare Fusion, which we have tested and verified it works fine. VMware Fusion is recommended for home users, students and business professionals who are looking for the easiest, fastest and most reliable way to run Windows programs on their Macs without rebooting. On your Mac, you'll need to buy a copy of VMWare Fusion and of course any version of Windows you'd like to run. Once you've installed them, you can install Chess King as if you were on a Windows PC.



Screenshot of Chess King running on a Mac

For any questions relating to Chess King support, feel free to write the author to support@chess-king.com

Article by Pufichek